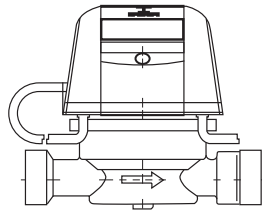




HEAT METER TYPE

Compact heat meter
Elf 2
DN 15-20



CE, MID, IP65

TRANSPORTATION AND STOCK CONDITIONS

Protect against shock and vibration

Storage at temperatures above 0°C

ESSENTIAL INFORMATION

| | | |
|--|---------------------------|---------------------|
| | Operating range | max 0,1-90°C |
| | Ambient temperature range | 5-55°C |
| | Operating pressure | max 16 bar |

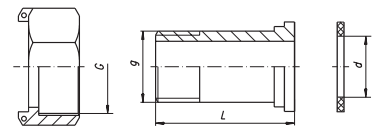
| Parametrs | Q3 [m³/h] | DN [mm] | Lenght [mm] | Connection |
|-----------|-----------|---------|-------------|------------|
| Elf 2 | 0,6 | 15 | 110 | G¾ |
| | 1 | 15 | 110 | G¾ |
| | 1,5 | 15 | 110 | G¾ |
| | 1,5 | 20 | 130 | G1 |
| | 2,5 | 20 | 130 | G1 |

| DN15 | 17 | 29 | 25 Nm |
|-------------|----|----|-------|
| DN20 | 20 | 36 | 30 Nm |

* Pipelines may feature other fastener sizes

COMPONENTS REQUIRED TO HEAT METER INSTALL

| Couplings available from Apator Powogaz | [G] | [g] | [d] | [L] | Indeks |
|---|-----|-----|-------|------|--------------|
| Set of couplings with gaskets DN 15 mm | ¾" | ½" | 17 mm | 37,5 | 0616-100-018 |
| Set of couplings with gaskets DN 20 mm | 1" | ¾" | 23 mm | 45,5 | 0616-100-019 |



CLASSIFICATION OF ENVIRONMENTAL CONDITIONS

Technical class acc. to RMG from 18 December 2006 (MID) - **M1**
Electromagnetic class acc. to RMG from 18 December 2006 (MID) - **E1**
Climatic and mechanical class acc. to PN-EN 14154-3:2005 + A1 - **B**

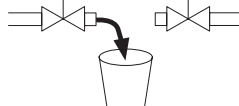
INSTALLATION AND OPERATION GUIDELINES



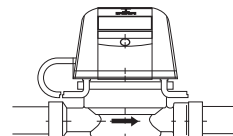
Installation shall be performed by persons with authorisations related to the use of water supply and sewage networks



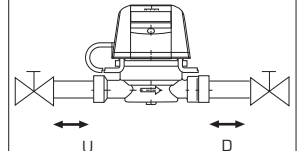
Close all valves prior to installation/dismantling



When installing/dismantling the valves, place a vessel underneath the device



Install the heat meter in the direction of water flow



Straight sections before and after the heat meter should be used according to the recommendations contained in the manual at www.apator.com

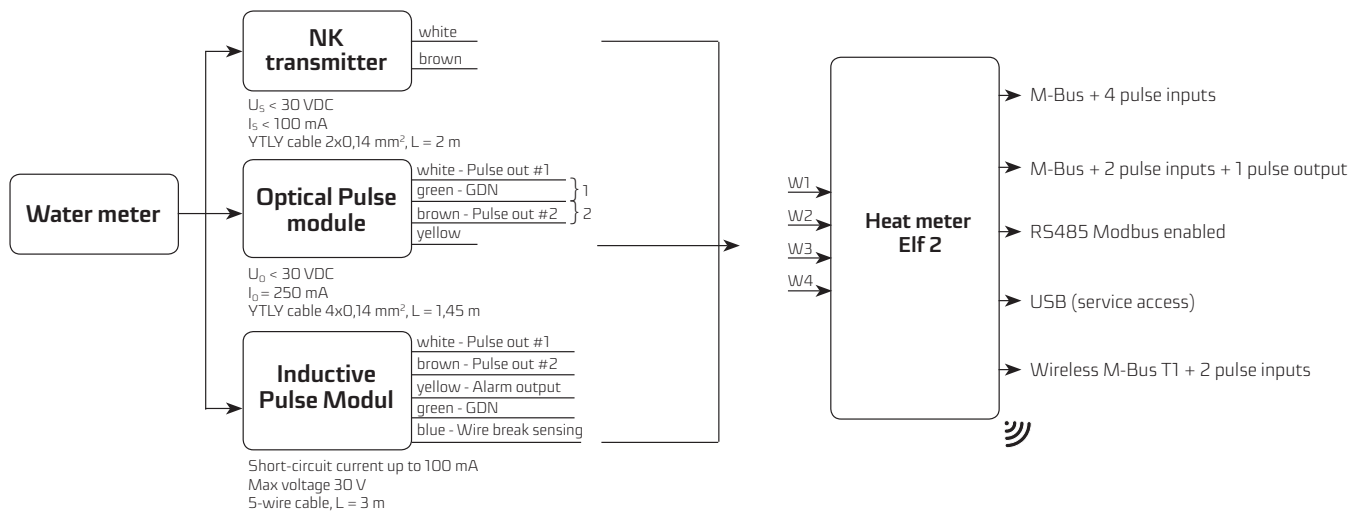
✂ INSTALLATION AND OPERATION GUIDELINES

| | | | | |
|---|--|---|---|---|
| | | | | |
| Protect from air locks, do not install at the highest point of the installation | Do not install the heat meter with the counter downwards | Protect against stress resulting from mounting on misaligned installation | Protect from flooding | Protect from freezing |
| | | | | |
| Protect from high temperatures and UV radiation | Do not expose to vibrations | Do not use near acids, gas and electrical installations | Protect from impact | Protect from the hydrodynamic water hammer effect |
| | | | <p>Do not place the used device together with municipal waste. Take it to a waste segregation SERVICE point – comply with the rules of recycling.</p> <p>IMPORTANT: Detailed information on the operation of the device can be found at www.apator.com</p> | |
| Protect from contaminants at the installation site | SERVICE Send damaged water meters to the service centre | | | |

✂ DETAILED MOUNTING OPTIONS AND REQUIREMENTS ARE SPECIFIED IN THE MANUAL AVAILABLE AT: www.apator.com

| Mounting positions | | | | | | | |
|--------------------|---|---|---|--|-------|--|-------|
| Elf 2 | ✓ | ✓ | - | | UO DO | | U5 D3 |

✂ CONFIGURATION OF A SPECIFIC HEAT METER WITH TRANSMITTER AND WATER METER - DETAILS FROM THE MANUFACTURER



Apator Powogaz S.A. reserves the right to modify and improve the manufactured devices without notice.