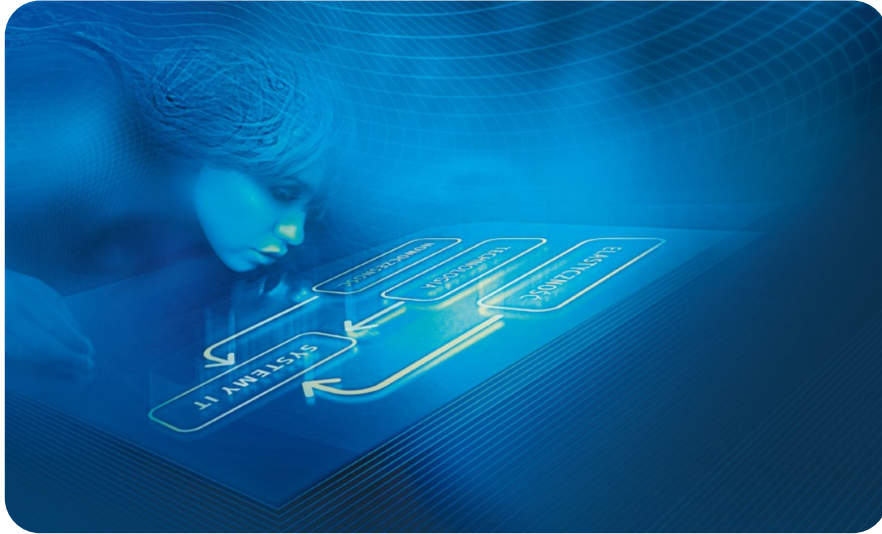




IT SYSTEMS



## Inkasent Pc

Inkasent PC is a computer system to facilitate the management of transmission as well as measurement and transmission devices, including their output reading data.

The system is particularly useful for infrastructure designs in sparsely populated areas, and for all configurations where constructing a fixed system using such measurement devices as water meters, heating cost allocators, heat meters and gas meters is not feasible.

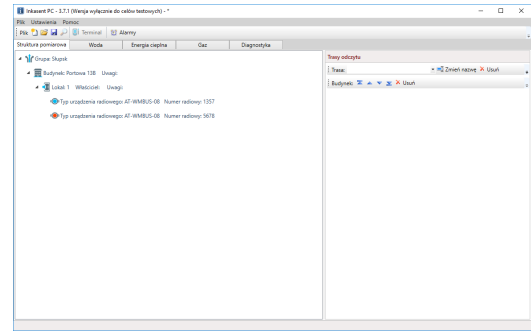
The reading data is stored in a mobile device, which can then be exported to Inkasent PC.

The data collector does not have to enter the premises, it is sufficient to walk nearby.



### BASIC SYSTEM FUNCTIONALITIES

- creating databases, including information on water meters and heat meters with meter reading routes
- comments for specific water meters
- exporting data to “txt” or “csv” files



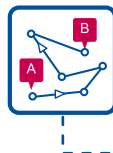
**Inkasant PC** is under continuous development in order to meet the evolving requirements of different customers, and to enable support for both the metering devices available on the market, today and in the future.

After implementing the system it is necessary to complete training on the basic operation of the system, as well as obtaining technical support by contacting our customer service department or purchasing a maintenance contract.

You can buy a licence for Inkasant PC or use the server version of the software, i.e. the fully functional, ready to use system hosted on our servers.



- **Main panels**
  - Measurement structure
  - Water
  - Heat energy
  - Gas
  - Diagnostics



- **Measurement structure**
  - An easy to use tool to create the address structure for the measurement points, for the following types of measurement point: group, building, flat, and RF device
  - Clearly presented visualization and management of the address structure



#### ○ Integration with mobile meter reading terminals

- Downloading a list of customer routes from the terminal
- Exporting a measurement route to the terminal
- Importing reading data from the terminal
- Exporting customer event types



#### ○ Summaries of readings and consumptions for specific measurement points

- Displaying summaries of readings for the selected measurement points, transmission devices or measurement groups for specific periods
- History of readings for a measurement point or transmission device over a specific period



#### ○ Export

- Exporting data and reports from the system into popular file formats



#### ○ Management of measurement and transmission devices

- Modifying devices within the measurement structure
- Adding new measurement devices to the measurement structure



#### ○ Alarms

- Receiving information on failures from transmission devices, and presentation of failure data
- Clearly presented summaries of all the alarms at measurement points



#### ○ Reports

- Easy viewing of the generated reports
- Creating reports by device type, route or measurement point



Apator Telemetry Sp. z o.o.  
ul. Portowa 13A, 76-200 Słupsk  
e-mail: [sprzedaz@telemetry.eu](mailto:sprzedaz@telemetry.eu)  
tel. +48 509 599 499  
[www.telemetry.eu](http://www.telemetry.eu)